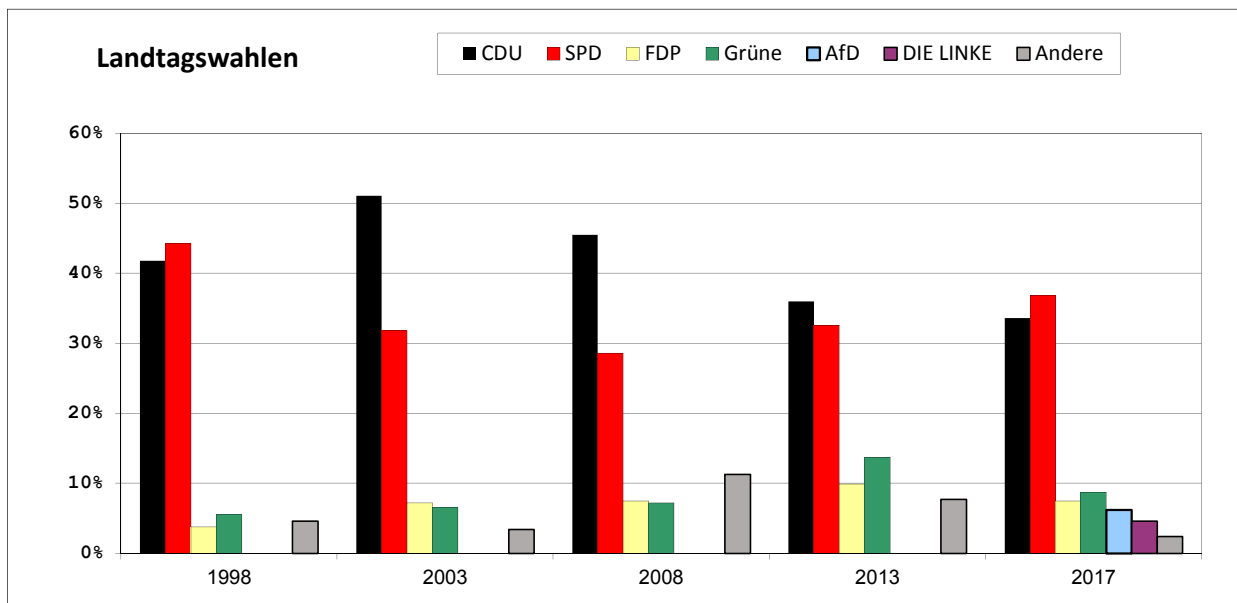
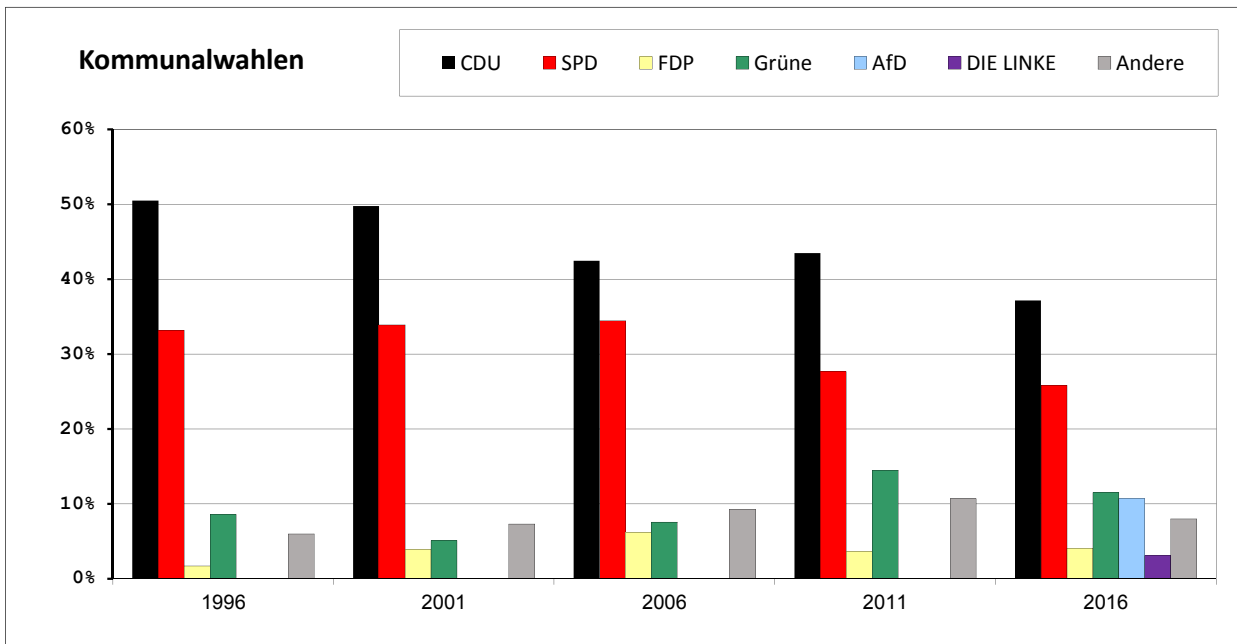


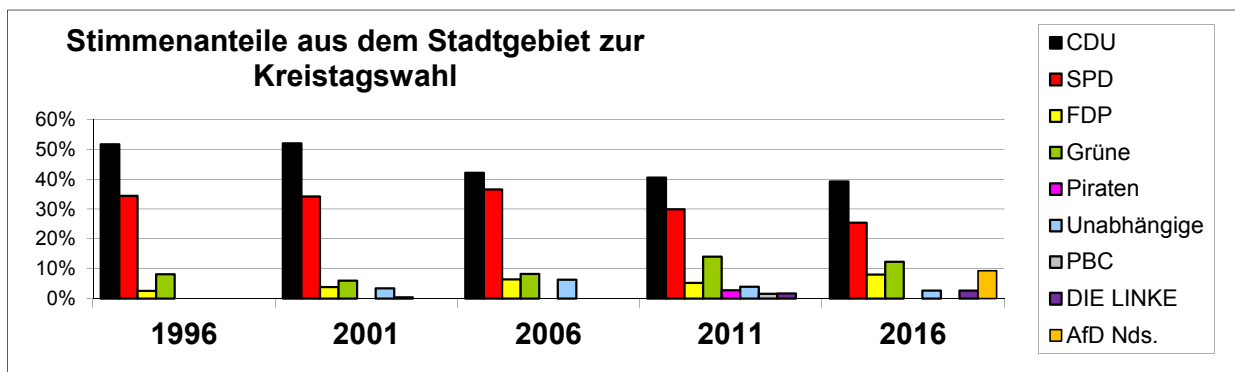
## Wahlen

Wahlergebnisse	CDU	SPD	FDP	Grüne	AfD	DIE LINKE	Andere
Kommunalwahl 1996	50,5%	33,2%	1,7%	8,6%			6,0%
Kommunalwahl 2001	49,8%	33,9%	3,9%	5,1%			7,3%
Kommunalwahl 2006	42,5%	34,5%	6,2%	7,6%			9,3%
Kommunalwahl 2011	43,5%	27,7%	3,6%	14,5%			10,7%
Kommunalwahl 2016	37,2%	25,8%	4,1%	11,5%	10,7%	3,1%	8,0%
Landtagswahl 1998	41,8%	44,3%	3,8%	5,5%			4,6%
Landtagswahl 2003	51,1%	31,8%	7,2%	6,5%			3,4%
Landtagswahl 2008	45,4%	28,6%	7,5%	7,2%			11,3%
Landtagswahl 2013	36,0%	32,6%	9,9%	13,7%			7,7%
Landtagswahl 2017	33,6%	36,9%	7,5%	8,7%	6,2%	4,6%	2,4%

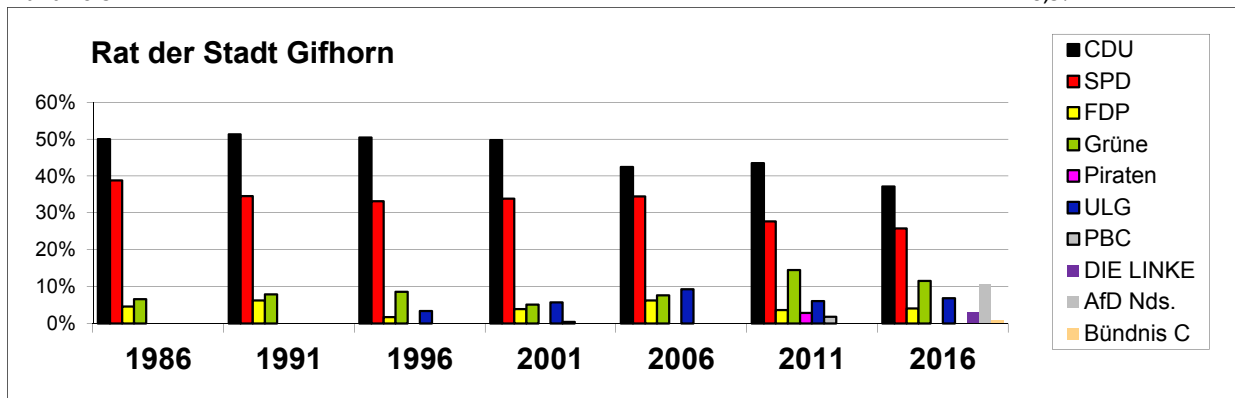


## Ergebnisse der Kommunalwahlen

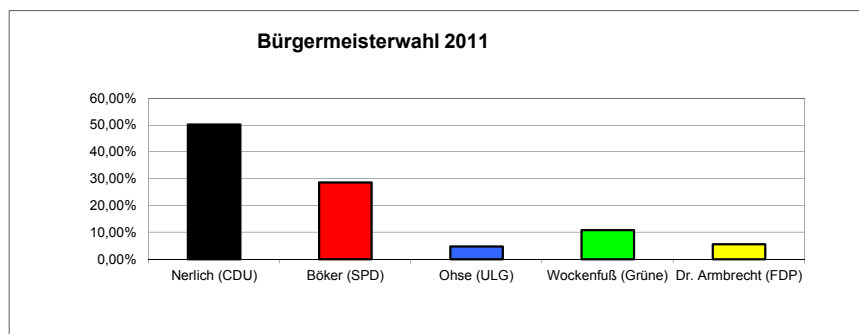
Kreistag (Erg. Stadt)	1986	1991	1996	2001	2006	2011	2016
CDU	49,7%	51,4%	51,7%	52,0%	42,2%	40,6%	39,3%
SPD	38,8%	34,3%	34,4%	34,2%	36,6%	29,9%	25,4%
FDP	4,9%	5,9%	2,6%	3,9%	6,5%	5,3%	8,1%
Grüne	6,6%	8,4%	8,2%	6,0%	8,3%	14,1%	12,4%
Piraten						2,8%	
Unabhängige				3,5%	6,3%	4,0%	2,7%
PBC				0,4%		1,6%	
DIE LINKE						1,7%	2,7%
AfD Nds.							9,4%



Rat	1986	1991	1996	2001	2006	2011	2016
CDU	50,1%	51,3%	50,5%	49,8%	42,5%	43,5%	37,2%
SPD	38,8%	34,6%	33,2%	33,9%	34,5%	27,7%	25,8%
FDP	4,6%	6,2%	1,7%	3,9%	6,2%	3,6%	4,1%
Grüne	6,6%	7,9%	8,6%	5,1%	7,6%	14,5%	11,5%
Piraten						2,8%	
ULG			3,4%	5,7%	9,3%	6,1%	6,8%
PBC				0,4%		1,8%	
DIE LINKE							3,1%
AfD Nds.							10,7%
Bündnis C							0,9%

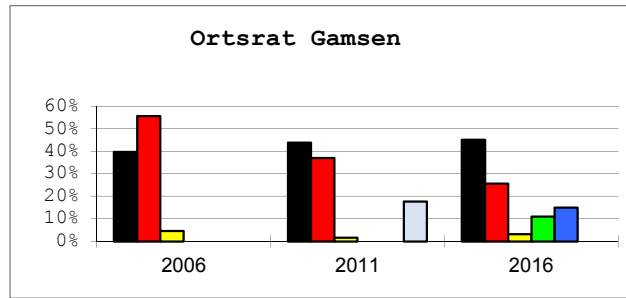


Bürgermeister	2011
Nerlich (CDU)	50,30%
Böker (SPD)	28,60%
Ohse (ULG)	4,70%
Wockenfuß (Grüne)	10,80%
Dr. Armbricht (FDP)	5,60%

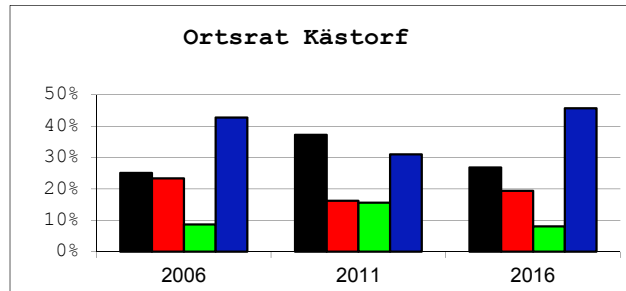


## Ortsratswahlen

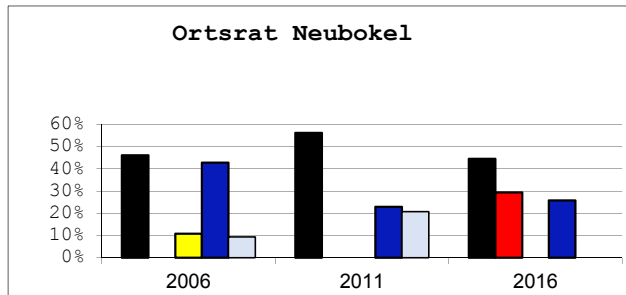
Ortsrat Gamsen	2006	2011	2016
CDU	39,8%	43,8%	45,1%
SPD	55,6%	37,0%	25,7%
FDP	4,6%	1,6%	3,2%
Grüne			11,0%
ULG			15,0%
Sonstige		17,7%	



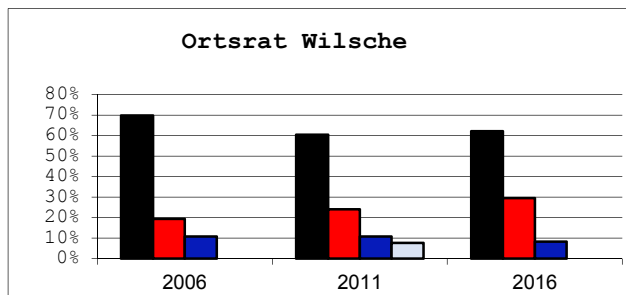
Ortsrat Kästorf	2006	2011	2016
CDU	25,1%	37,2%	26,8%
SPD	23,4%	16,2%	19,4%
Grüne	8,7%	15,6%	8,1%
ULG	42,8%	31,0%	45,7%



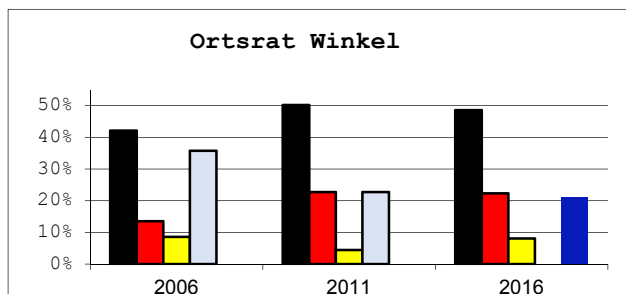
Ortsrat Neubokel	2006	2011	2016
CDU	46,2%	56,3%	44,6%
SPD			29,5%
FDP	10,8%		
Grüne			
ULG	42,9%	22,9%	25,9%
Sonstige	9,4%	20,8%	



Ortsrat Wilsche	2006	2011	2016
CDU	69,8%	60,4%	62,1%
SPD	19,4%	24,1%	29,6%
ULG	10,8%	10,8%	8,3%
Sonstige		7,7%	



Ortsrat Winkel	2006	2011	2016
CDU	42,1%	50,2%	48,6%
SPD	13,5%	22,7%	22,3%
FDP	8,6%	4,4%	8,1%
Sonstige	35,8%	22,7%	
ULG			21,0%



Legende:

CDU	SPD	FDP	Grüne	ULG	PBC	Sonstige